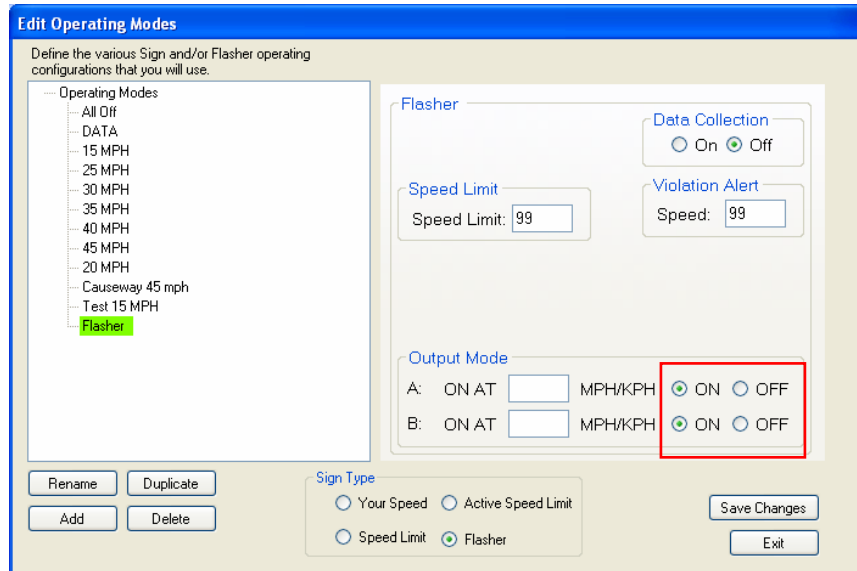


Flasher - Stop Alert – Stealth Data - Setup in DisplayManager

The most effective way to use the flashers is to configure them with DisplayManager to control each device.

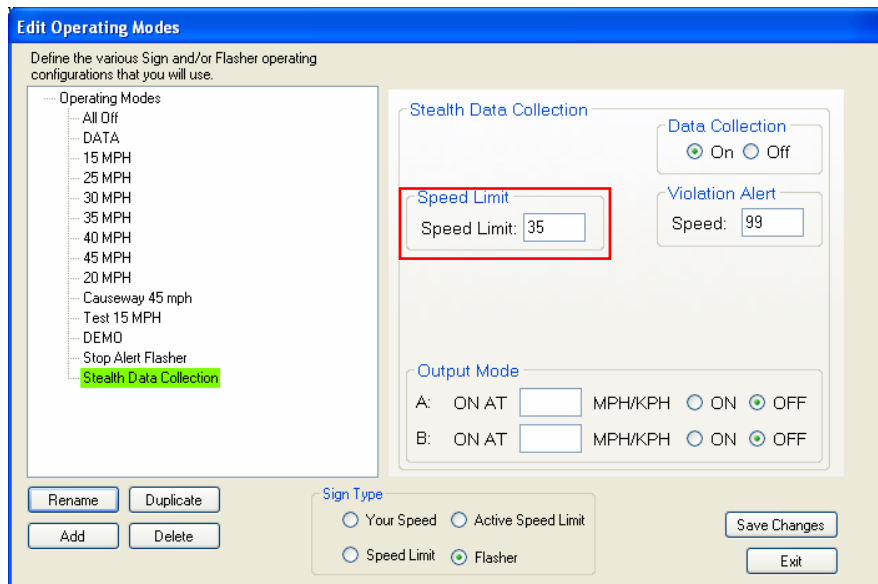
Read and acquaint yourself with the functions of DisplayManager. Using “Scheduler” you can configure the flashers to turn On or Off at predetermined times, set a different schedule for each day of the week, and establish exceptions for holidays or vacation periods. When operated in the “Fixed” mode, the flashers are operational 24 hours a day.

Flasher units do not contain a radar. When setting up the modes in Scheduler, your Mode options should look similar the following example. Use the Output Mode to turn the flashers ON / OFF.

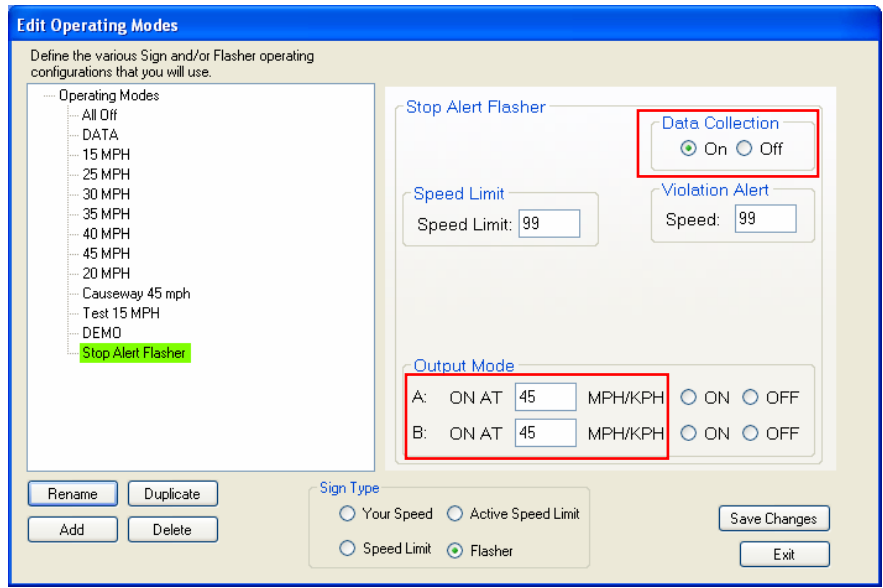


Stealth Data Collection Box

A Stealth Data Collection box can be set up to collect traffic data without displays or flashers attached. A Stealth Box contains a radar. Data Collection must be ON or the radar will not have power. Set the Speed Limit to the posted limit. Violation alert is not used, it can be set to 99.



Stop Alert systems contain a radar to activate the warning flashers. Data Collection must be ON or the radar will not have power. The Speed Limit and Violation Alert can each be set to 99 if you are not collecting vehicle speed data. Set the speed you wish to activate the flashers with the Output Mode.



A Stop Alert system might likely operate 24/7 in the fixed mode with a single warning beacon which activates when a vehicle is detected.

Following are suggested settings for such a system.

