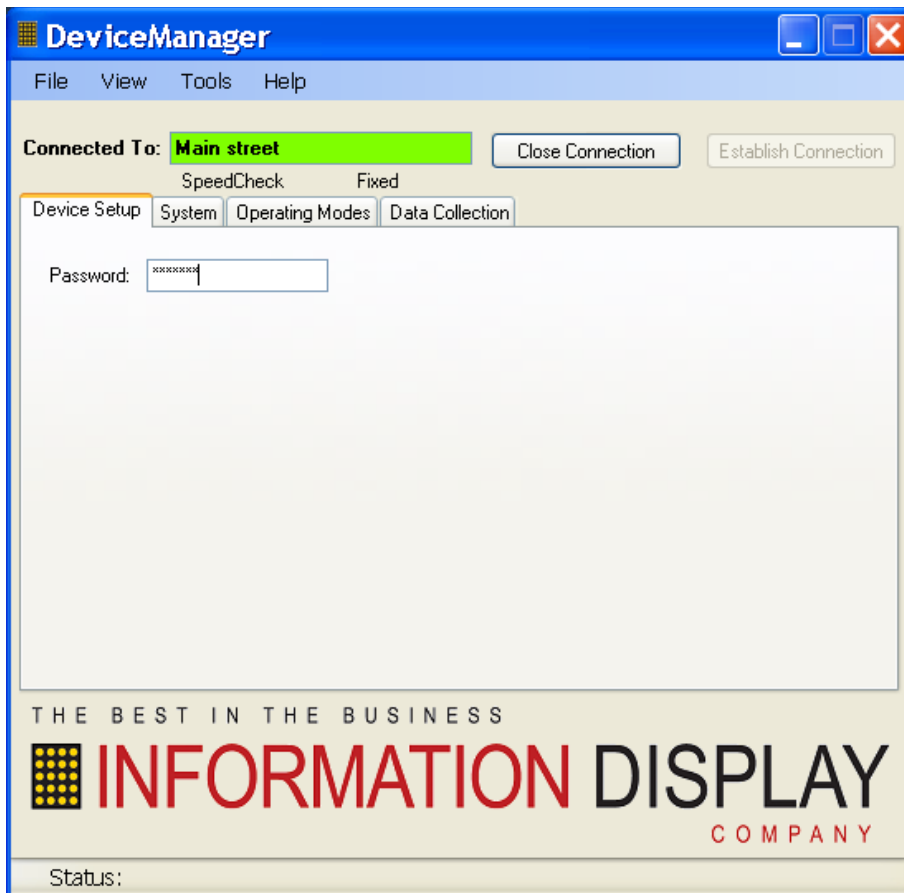


DeviceManager settings for Variable Speed Limit Alert (VSA) and Advisory Speed Alert (ASA/ASL) signs.

- 1) Connect with display and select the Device Set Up tab. Use password "Funlock" – case sensitive.



- 2) In device setup tab, click Factory settings button.
 - a. In Factory setting page, make sure the Device Type is set to Variable Speed limit/Advisory Speed or Variable speed limit alert/Advisory Speed Alert , depending on model.
 - b. Choose enable software dimming if lower brightness is desired.

Factory Settings

Factory Settings

SLOWDOWN Installed
 Yes No

Enable TrafficAnalyzer
 Yes No

Enable SchedulePro
 Yes No

Time Reference
 None GPS Modem

Test

Auto Synchronize Clock
 Yes No

Enable Radar Auto Reset
 Yes No

Device Type:
 DC-FB
 FlashAlert / SlowDown Alert
 Flasher System / Flasher Controller
 SpeedCheck / "Your Speed"
 TrafficFlow Manager
 TrafficInfo
 TravelTime
 VariableSpeed Limit / Advisory Speed
 VariableSpeed Limit Alert / Advisory Speed Alert

Force Output Always On
 Output A Output B

Enable Software Dimmer
 Yes No

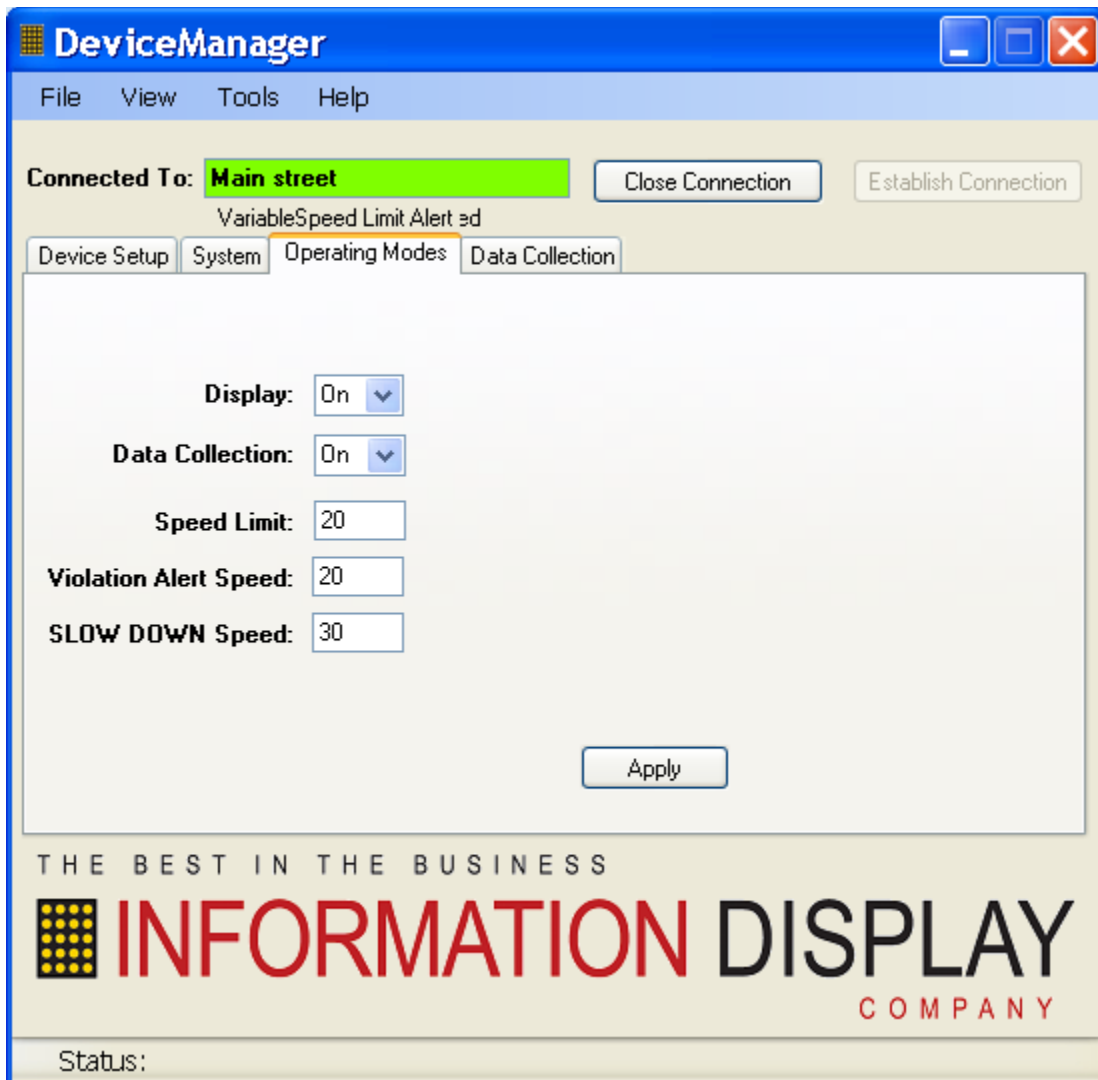
Radio Link Short Packets
 Yes No

Reset Factory Defaults Voltage Correction Factor

Apply Exit

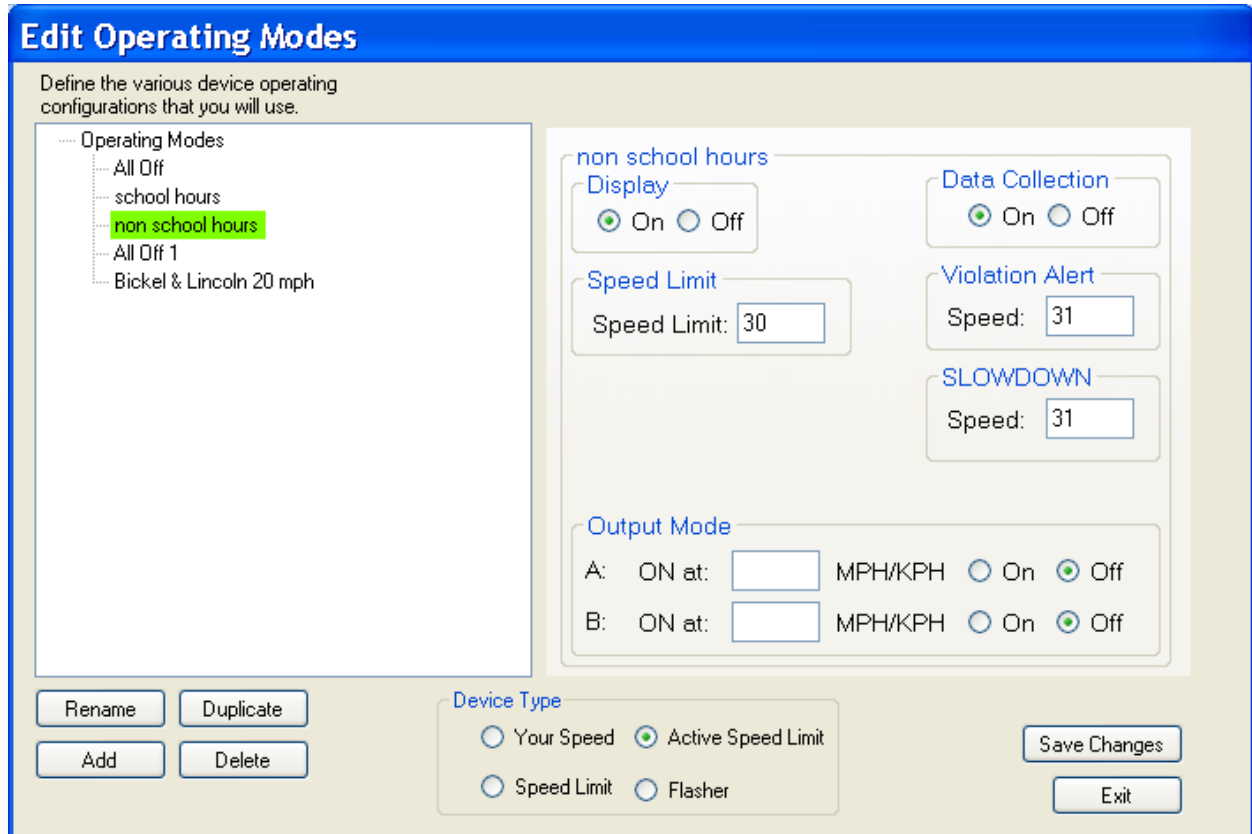
Status:

3) In operating mode tab set desired values.



Using Scheduler

If using scheduler, in operating modes, select sign type Speed Limit or active speed limit depending on model. For Advisory Speed signs, select active speed limit.



Setting Up Signs to display upon Vehicle Detection Only.

To set display up to be blank and display speed or advisory limit upon vehicle detection only, in Factory settings page, select device type Speedcheck/Your Speed.

- 1) In device setup tab select HS Cut Off: Display Speed Limit
- 2) In operating mode tab, set High Speed Cut off to 0 and Minimum Display Speed to 1.

Follow DeviceManager guide for further setup instructions.